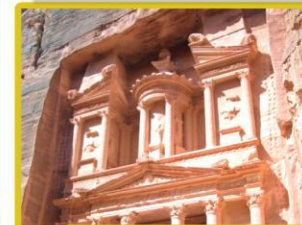
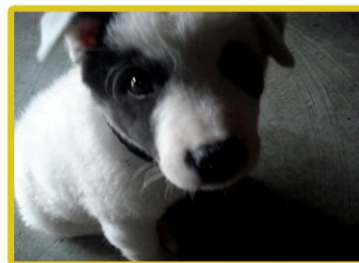
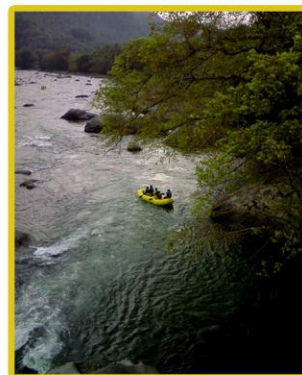
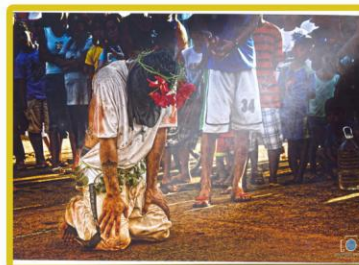
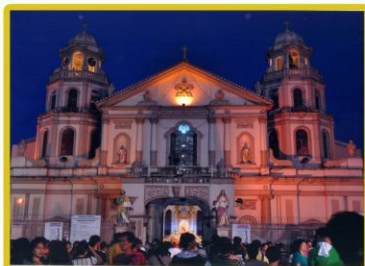




# @LIBNEWS

OFFICIAL NEWSLETTER OF THE ROMEO P. ARINIEGO, M.D. LIBRARY SERVICES



**JUNE 2011**  
VOLUME 1  
ISSUE 2



## A YEAR OF TRIUMPHS FOR THE LIBRARY

Our transfer to the new and modern library building was an immediate success. Loved by our students and admired even by our colleagues outside DLSHSI, now it has become the place to be in our campus. It also helps us gained a very positive and high satisfaction rate in our library services. In addition, even CHED and PAASCU were impressed with the environment that the library has projected.

With our building in place, consistently rationalizing our services, significantly updating our collection and continuously modernizing our facilities come next. These are all geared towards meeting the ever changing needs of the students and faculty members.

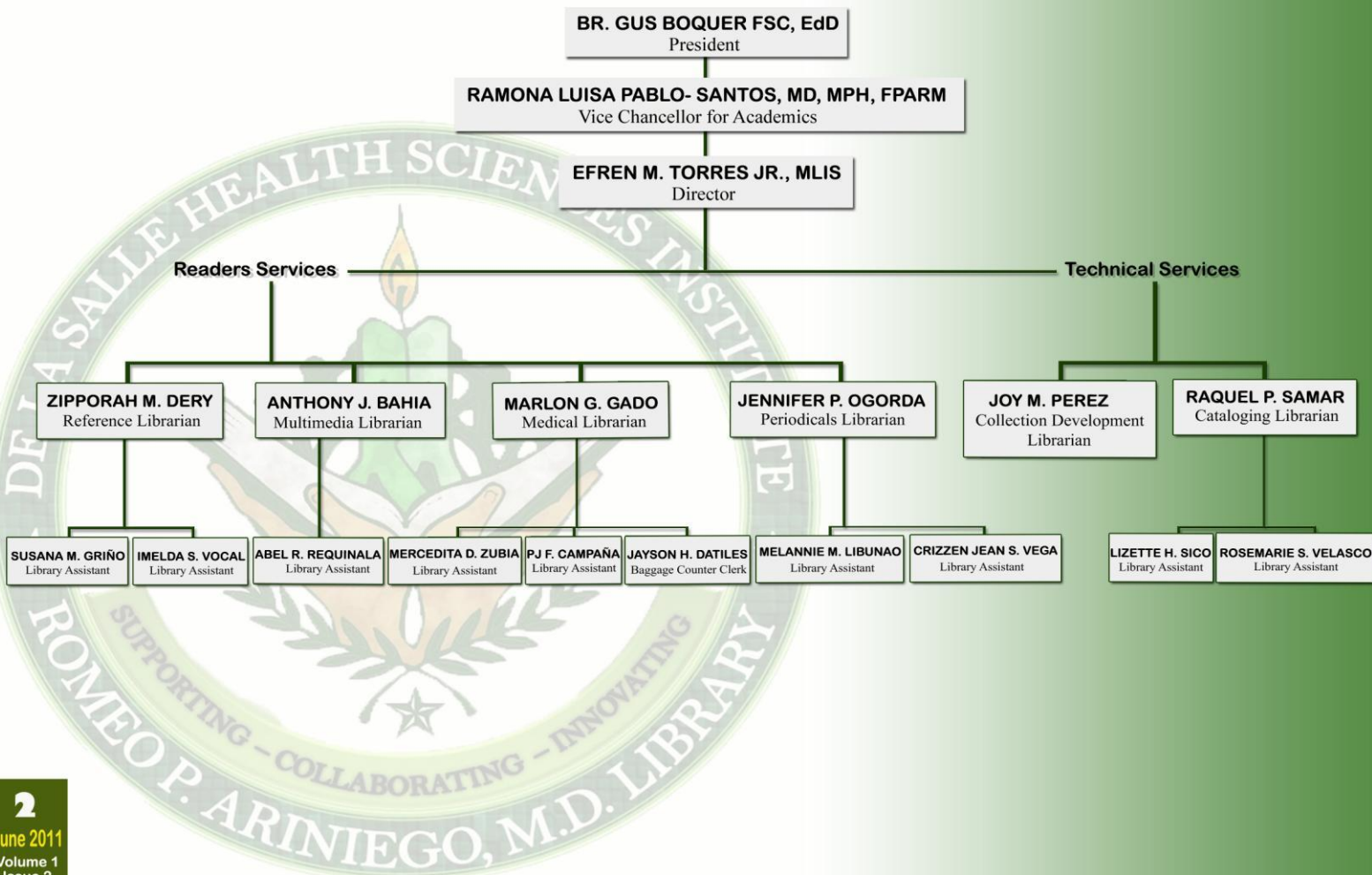
All in all, an eventful, but entirely challenging, year for Romeo P. Ariniego, MD Library, but the loyalty and professionalism of our staff remained impressive throughout. We are proud of the services we offer, and are grateful to the colleges/departments for the high regard in which we are held.

We look forward to a more fruitful, more independent yet more creative year for the RPAMD Library.

Again, please keep us posted; we want to know.

Welcome to the 2<sup>nd</sup> issue of @LibNews!

## Organizational structure of the Romeo P. Ariniego, M.D. Library Services for SY 11-12



# LIBRARY ACCOMPLISHMENTS AND USAGE STATISTICS REPORT FOR SY 10-11

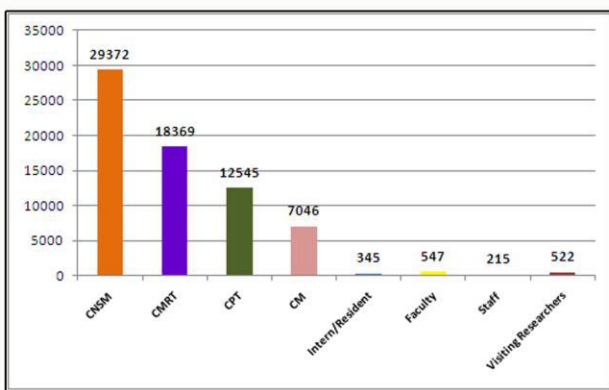
The library collects statistics on all aspects of our service; from how many people come into the library to how many times particular books are borrowed.

Over time these figures provide a view of what, how, where and when library patrons use our facilities and resources and this information helps us to review existing services and make plans for the future. Comparing statistics from the past five years highlights some big changes. The number of current subscriptions to printed journals has shrunk to just 20 today, but over the same period the library have increased the number of e-journals available tremendously. Meaning most of our users access journal articles online.

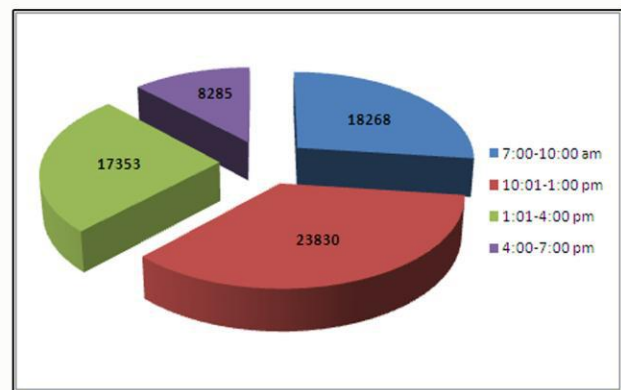
As shown in the graph, the College of Nursing and Midwifery emerged as the top most library users with a total of 29,372 or an average of 119 users a day. It was followed by the College of Medical Radiation Technology with 18,369 or an average of 75 users a day. Overall, a total of 67,692 users from the student sector were recorded. The faculty members from all colleges tallied 547 library users, 215 users from the support staff, and 522 from visiting researchers.

Book circulation has increased significantly. Beginning June 1, 2010, 8,049 books were loaned out. It is the library's highest annual figure over the last 3 years. CNSM students emerged as the top most borrowers with 2,456 followed by the Medicine students with 2,138. Employees and Residents/Interns were the least frequent borrowers for the past school year.

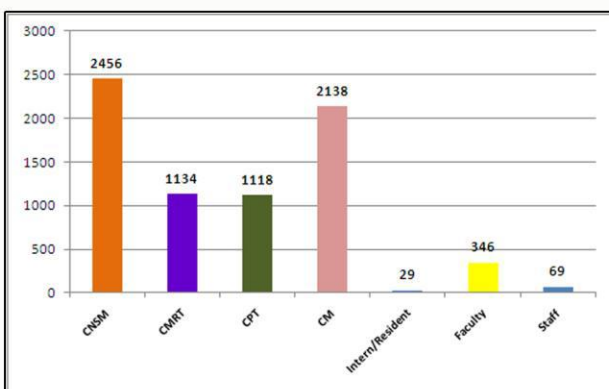
See graphs for more library facts and stats.



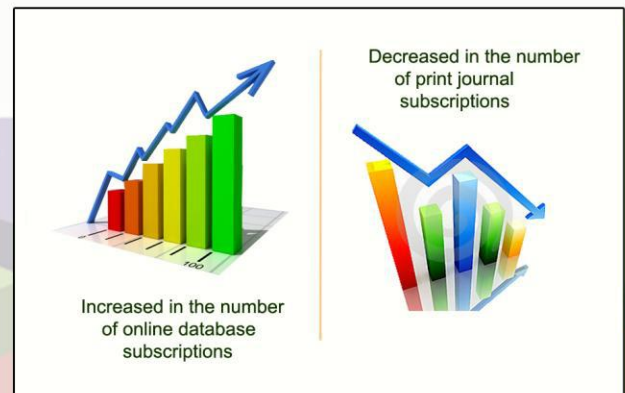
Graph 1:  
Use of library facilities by patron type



Graph 2:  
Use of library facilities by time of usage



Graph 3:  
Use of library resources by patron type



Graph 4:  
Journal & Online Database Subscription

## Trivia:

Did you know? A total of 68,691 people used/visited the library for this school year alone. August was our busiest month with 10,923 library users. The time period from 10:01 am to 1:00 pm is when we encounter the heaviest influx of library users. **The best time to do your reflection inside the library is during the 7:01-10:00 pm when there are fewer people and more quiet time for yourself.**



# Celebrating the 100 years



Soft Launching and Ribbon C





# Cutting *Centennial Archives* and *Historical Exhibit*

06-16-2011



# 97 % Customers' satisfaction with library services

The Romeo P. Ariniego, M.D. Library Services' most recent customer satisfaction reveals a 97% satisfaction rating with the service provided by our staff.

The impressive result proved to be the icing on the cake for the library's creative initiatives for school year 2010 -2011. Conducted for the whole month of January 2011 using emotion icon and color coded chips, the survey aimed at determining how a patron feels after every transaction or service provided by the library.

Overall, results of the survey revealed the following :

1. There were a total of 1,616 respondents where 44.62% (721) were from the Medicine section, 30.45% (492) from the periodicals section and 24.92% (403) were from the allied health and reference section. The technical services and office of the chair were excluded from the survey.
2. Out of the 1,616 respondents, 1,583 users equivalent to 97.97% expressed satisfaction with the services provided by the RPAMD Library. Only 33 respondents (2.04%) felt otherwise.
3. Among the different sections of the RPAMD Library, the Medicine Section posted the highest satisfaction rating with 99.59% of its clients responding positively to the survey question, closely followed by the Periodicals Section with 97.76% satisfaction rating and the Allied Health and Reference Section with 95.29%.
4. By time period, the overall satisfaction rating for the library was highest during the 7:00-10:00 am period with only 1 user not affirming. However, lower satisfaction was received during the 10:01-1:00 pm period with 14 users responding negatively.

(see Tables of Summary of Respondents and Survey by Time Period)

The following statements can be concluded from the survey:

1. Overall, the RPAMD Library provides and renders excellent services.
2. The more number of customers, the higher the satisfaction ratings shall be. While the less customers we have, the lower the satisfaction ratings we shall get.
3. Library users' satisfaction is high during opening hours and declines during lunch time. Interestingly, satisfaction rating tends to get higher during the evening period. (i.e., 7pm-10pm period where only the Medicine section is open)

Some notable suggestions from our students include :

- More books and journals
- Provision for an elevator
- Reach students thru social media tools such as facebook
- Improve photocopying services
- More computer terminals

We would like to thank all students, faculty members, staff, and visiting researchers who participated in this survey. A follow-up study shall be conducted next school year so that we can get more specific concerns from our patrons.

Section	Happy	Sad	Total	Percentage
Medicine section (1st flr.)	718	3	721	44.62
Allied Health & Reference section (2nd flr.)	384	19	403	24.94
Periodicals, Theses & Gen. Education (3rd flr.)	481	11	492	30.45
<b>Total</b>	<b>1,583</b>	<b>33</b>	<b>1,616</b>	<b>100</b>

Section	7:00 am - 10:00 am		10:01 am - 1:00 pm		01:01 pm - 4:00 pm		04:01 pm - 7:00 pm		07:01 pm - 10:00 pm		Total		Grand Total
	Happy	Sad	Happy	Sad	Happy	Sad	Happy	Sad	Happy	Sad	Happy	Sad	
Medicine section (1st flr.)	137 100 %	0	147 99.32%	1 0.68%	161 99.38%	1 0.62%	138 99.28%	1 0.72%	135 100%	0	718 99.58%	3 0.42%	721
Allied Health & Reference section (2nd flr.)	72 100 %	0	117 92.86%	9 7.14%	124 96.88%	4 3.13%	71 92.91%	6 7.79%	- -	- -	384 95.29%	19 4.71%	403
Periodicals, Theses & Gen. Education (3rd flr.)	137 99.28%	1 0.72%	138 97.18%	4 2.82%	96 96 %	4 4%	110 98.21%	2 1.79%	- -	- -	481 97.76%	11 2.24%	492
<b>Total</b>	<b>346 99.71%</b>	<b>1 0.29%</b>	<b>402 96.63%</b>	<b>14 3.37%</b>	<b>381 97.69%</b>	<b>9 2.31%</b>	<b>319 97.26%</b>	<b>9 2.74%</b>	<b>135 100%</b>	<b>0</b>	<b>1583 97.76%</b>	<b>33 2.04%</b>	<b>1,616</b>



## KL-Singapore Book selection

On April 27 – May 4, 2011, 13 faculty members from the four colleges and the general education department, together with the Academic Services Director and the Library Chair, went to Malaysia to participate in the 30th Kuala Lumpur International Book Fair. The group also visited John Wiley & Sons, McGraw-Hill and World Scientific Publishing House in Singapore to check their latest book titles. This book selection activity, sponsored by Forefront Book Company, is done annually and participated by all colleges, to update our library collections.

## Photography lovers and travel buffs enjoy recent exhibitions at RPAMD Library

Library users' feedback was overwhelmingly favourable about our recent decision to host a summer photo exhibit at the lobby of the library. The exhibit showcased photos taken by our students, faculty members and staff about the different faces of summer in and out of the country. The exhibit ran for the whole month of May 2011.

We would like to acknowledge the following persons for sharing their very own pictures :

1. Ezekiel Bunda, 3rd yr. BSN student (2 photos)
2. Ian Lordeo A. Gutierrez, 3rd yr. Medicine student (2 photos)
3. Francesca Debbie Lee Liu, 2nd yr. Medicine student (4 photos)
4. Abigail Aguilar Navor, Medicine student (3 photos)
5. Raymart Movido, 3rd yr BSRT student (3 photos)
6. Florence Marie Uy, Medicine student (2 photos)
7. Dr. Patricia Cecilia Sy-Santos, OSS Dean (4 photos)
8. Dr. Deo L. Panganiban, ARAO Director (2 photos)
9. Ma. Chelsea P. Ambray, CNSM Faculty (1 photo)
10. Bethel Anne M. Payawal, Radiology Dept. (2 photos)
11. Estrella O. Cuaresma, Nursing Dept. (2 photos)
12. Elvera V. Tandog, PT Rehab Dept. (4 photos)
13. Mel Mendoza, VC-LMC (2 photos)
14. Jess Lacandazo, ICT Dept. (3 photos)
15. Jennifer Ogorda, Library (3 photos)
16. Raquel Samar, Library (2 photos)
17. Marlon Gado, Library (2 photos)
18. Abel Requinala, Library (1 photo)



*Some of the photos exhibited can be seen in our front cover.*

## PAASCU visits the Library

The Romeo P. Ariniego, M.D. Library Services welcomed Prof. Corazon Nera, Library Director of Lyceum University and PAASCU Accreditor for the area of Library, last April 7, 2011. The visit is part of the formal survey in granting Level 1 Accreditation status for the Medicine program. Prof. Nera was very pleased to see the progress made by the Library from her visit two years back. Mr. Torres, the library chair, was interviewed by Prof. Nera regarding the documents and exhibits submitted. She also asked the problems encountered by the staff and solicited suggestions and improvements for the library.







# Librarians & Staff



Library assistants Pj Campaña, Susana Griño, Melannie Libunao, Lizette Sico, Rosemarie Velasco, Imelda Vocal and Mercedita Zubia, attended an Advent Recollection held at the DLSHSI Two Hearts of Jesus and Mary Chapel on December 2, 6, 7, 2010.

Safety orientation training required by HRD on February 17 & 18, 2011, was attended by all librarians and library assistants at the 6th floor of Wang Bldg.

Library Chair Efren Torres Jr., together with librarians Anthony Bahia, Marlon Gado, Jennifer Ogorda, and Raquel Samar attended the 23rd National Congress of the Medical and Health Librarians Association of the Philippines (MAHLAP) on March 2-4, 2011 at the Siliman University, Dumaguete City. The theme of the national congress was "Understanding Accreditation Standard as a Means for Improvement and Excellence".

On March 17, 2011, library assistants PJ Campaña and Lizette Sico attended the PLAI-NCR lecture forum on "Becoming a Library and Information Professional" held at the National Library, Ermita, Manila.

A Lenten Recollection on March 28 & 29, 2011, was attended by Pj Campaña, Susana Griño, Lizette Sico, Rosemarie Velasco, Imelda Vocal and Mercedita Zubia at the DLSHSI Two Hearts of Jesus and Mary Chapel.

Library assistants Pj Campaña, Susana Griño, Lizette Sico, Rosemarie Velasco and Imelda Vocal, attended the DLSHSI Summer Getaway at the White Cove Beach Resort, Laiya, San Juan, Batangas on April 4, 2011.

On April 4-6, 2011, librarians Marlon G. Gado and Zipporah M. Dery attended a hands-on training on "Archives and Records Management" at Rizal Library, Ateneo De Manila University, Quezon City.

And for finishing her Master of Science in Library Science, Periodicals Librarian Jennifer Ogorda received an award during the "24th Annual Recognition Night" last February 2011 at the Villarosa Hall Convention Center.



**Editor & Writer: Efren M. Torres, Jr. MLIS**  
**Design and Layout: Anthony J. Bahia**  
**Photographs: Marlon G. Gado**  
**Circulation: Anthony J. Bahia and Lizette H. Sico**  
**Consultant: Juanito O. Cabanias, PhD**

**For inquiries, please contact the Romeo P. Ariniego, M.D. Library Services**

**481-8000** (Cavite Line)  
**(632) 988-3100** (Manila Line)  
**Ext 1456** Office of the Director  
**Ext 1452** Technical Services Section  
**Ext 1487** Reference Services/ Allied Health Section  
**Ext 1367** Medicine Section  
**Ext 1486** Periodicals/Theses Section

[www.dlshsi.edu.ph/library.php](http://www.dlshsi.edu.ph/library.php)  
[rpamdlibrary@dlshsi.edu.ph](mailto:rpamdlibrary@dlshsi.edu.ph)  
[dr.ariniegolibrary](https://www.facebook.com/pages/Romeo-P-Ariniego-MD-Library-Services-Center)  
[www.facebook.com/pages/Romeo-P-Ariniego-MD-Library-Services-Center](https://www.facebook.com/pages/Romeo-P-Ariniego-MD-Library-Services-Center)

**@LIBNEWS** ©2011  
De La Salle Health Sciences Institute